

Application Developments:

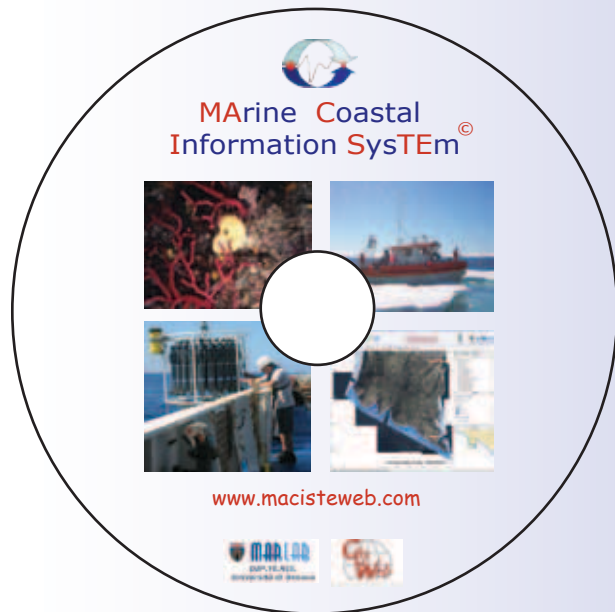
MACISTE-AMP: a support tool for environmental decision making and management of Protected Marine Areas (DSS, Decision Support System)

MACISTE-PS: a tool for the management of monitoring activities in port areas

MACISTE-ICE: a tool for the management and computerization of environmental data acquired in polar zones

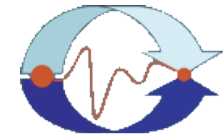
MACISTE-RIP: a tool for the management of the cleaning up of polluted marine areas

MACISTE-XYZ: request your personalised system for all your needs



Dipartimento per lo Studio del
Territorio e delle sue Risorse
Dip. Te. Ris.
University of Genoa
Corso Europa 26, 16132
Genoa-Italy
tel +39 010 353 8067
fax +39 010 353 8102
info@macisteweb.com

GIS & WEB S.r.l.
Geographical Information System
Open Source technology
Via Gramsci 27/9 - 16126
Genoa-Italy
tel +39 010 247 44 91
fax +39 010 941 21 32
info@gisweb.it - www.gisweb.it



MARine Coastal Information SYSTEm[©]



www.macisteweb.com

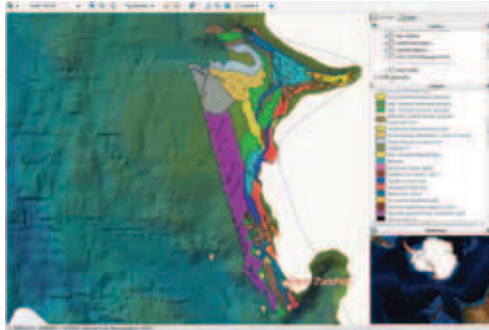
MACISTE



MARine Coastal Information SysTEM ©

An information system able to manage integrated specialised map and alphanumeric information on the marine environment.

Available to the general public via World Wide Web in real-time, user-friendly, and protected manner.



- ✓ uses **Open-Source** technology
- ✓ Internet accessible without the need to install dedicated software (**Application Service Provider**)
- ✓ access to all the information in a protected manner
- ✓ easy access to external databases
- ✓ automatically uploads chronological data
- ✓ receives and manages data from in-situ instruments in **real time**
- ✓ executes complex research of heterogeneous information
- ✓ generates **reports and dynamic graphics** of extracted data
- ✓ integrates **software libraries** for the elaboration and analysis of data
- ✓ able to create, visualise and print specialised **georeferenced maps**
- ✓ compatible with the latest generation of platforms
- ✓ provides maps and data using **WMS/WFS** (OGC compliant)

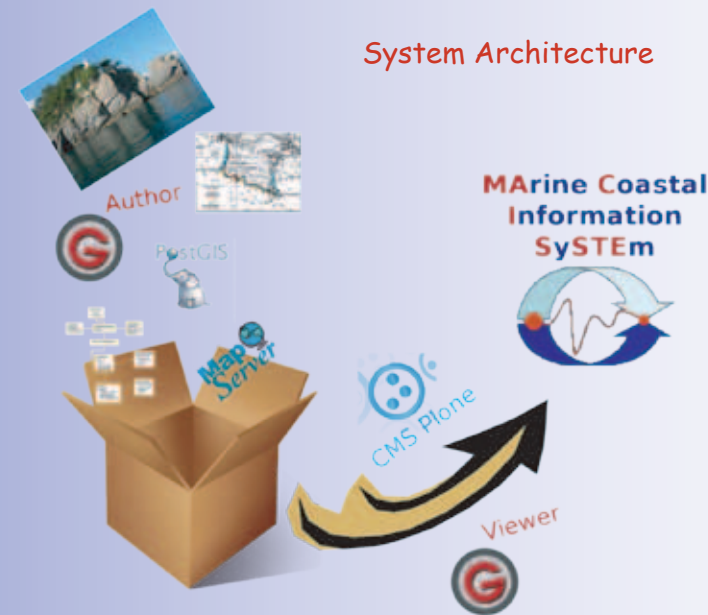
CMS PLONE

Plone is a flexible, user-friendly, multilanguage content management system that permits shared use of information for:

- ✓ organising and publishing quantitative and qualitative information
- ✓ data access in real time
- ✓ assigning different access privileges through **log-in** and **password**

THE GEODATABASE

The **geodatabase** contains spatial and descriptive information on the **marine environment** and takes into consideration the peculiarities of each **environmental compartment**. Data can be imported manually or by using common datasheets.



GISCLIENT

GISClient is specialised software developed for the environmental web, which permits the management of sophisticated GIS projects through the use of user-friendly commands. It offers a complete intuitive interface for UMN MapServer with the power of PostgreSQL/PostGIS. GISClient is able to create and manage distributed geospatial services, even in the case of particularly complex Data Warehouse.

The **author** component of GISClient permits the drawing of maps, definition of themes, and designing of visualisation and research models.

The **viewer** component enables the viewer to navigate the maps and query the database. The research results can be visualised as a list or table that can be exported in different standard formats.